

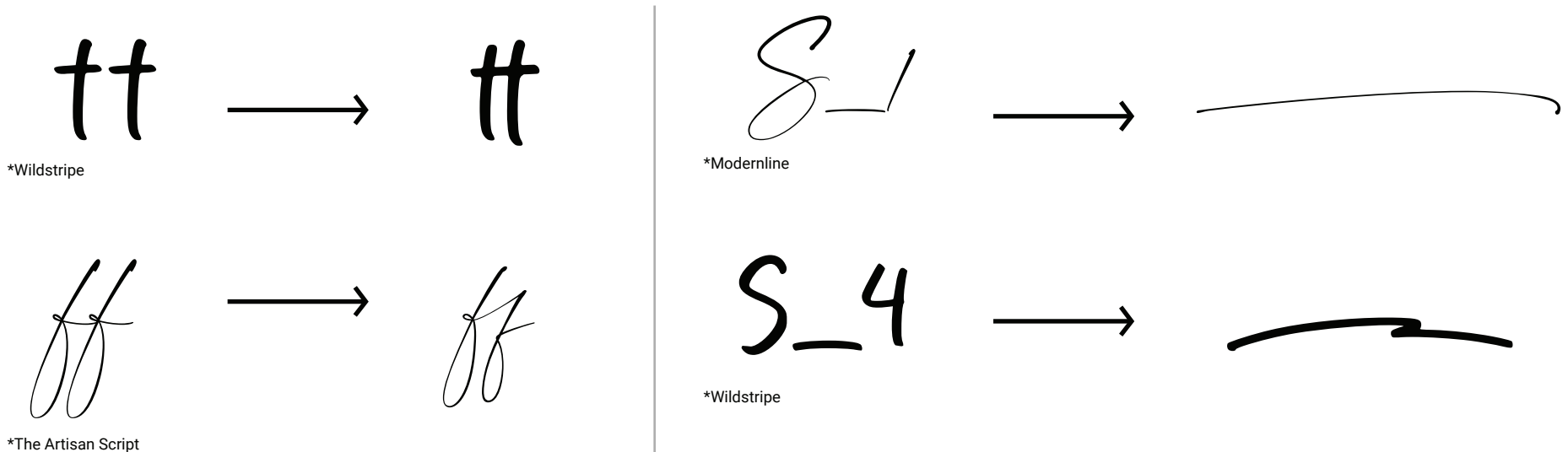


*find fonts
find feelings*

HOW TO USE LIGATURES

A ligature is a special character that combines two (or sometimes three) characters into a single character. A standard ligature is functional in nature, and is created to solve the problem of characters that crash when set next to each other. (www.fonts.com)

Look at example below :



*The example font above maybe different. But the instruction is apply to any font.

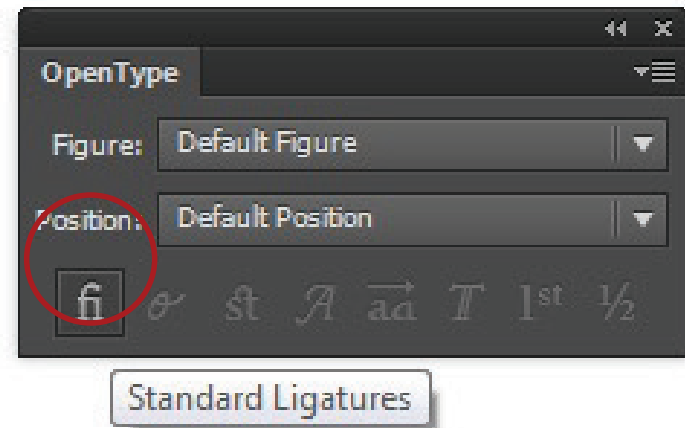
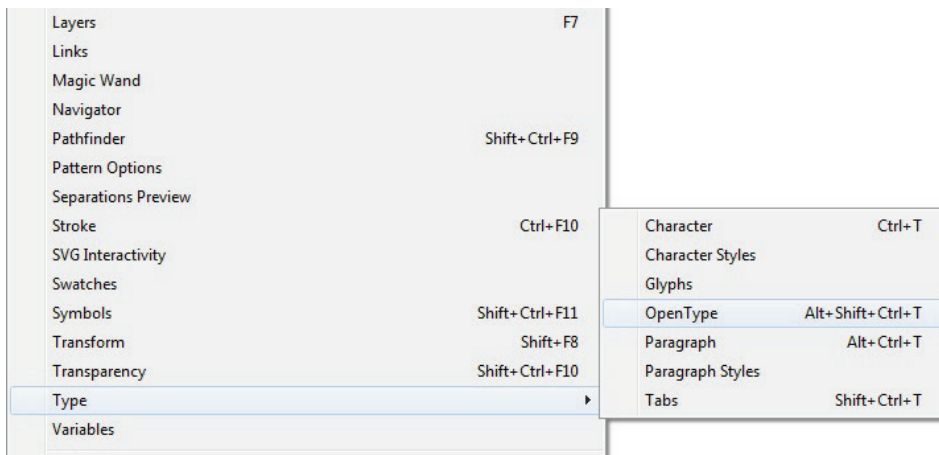


*find fonts
find feelings*

In this font guide, I will show you tutorials how to show ligatures in Adobe Illustrator, Adobe Photoshop, Microsoft Word, and Corel Draw. For other software design (Opentype supported), you can looking for tutorial at another source (Google, Youtube, etc).

1. Adobe Illustrator

Click Window - Type - Opentype - turn on Standard Ligatures



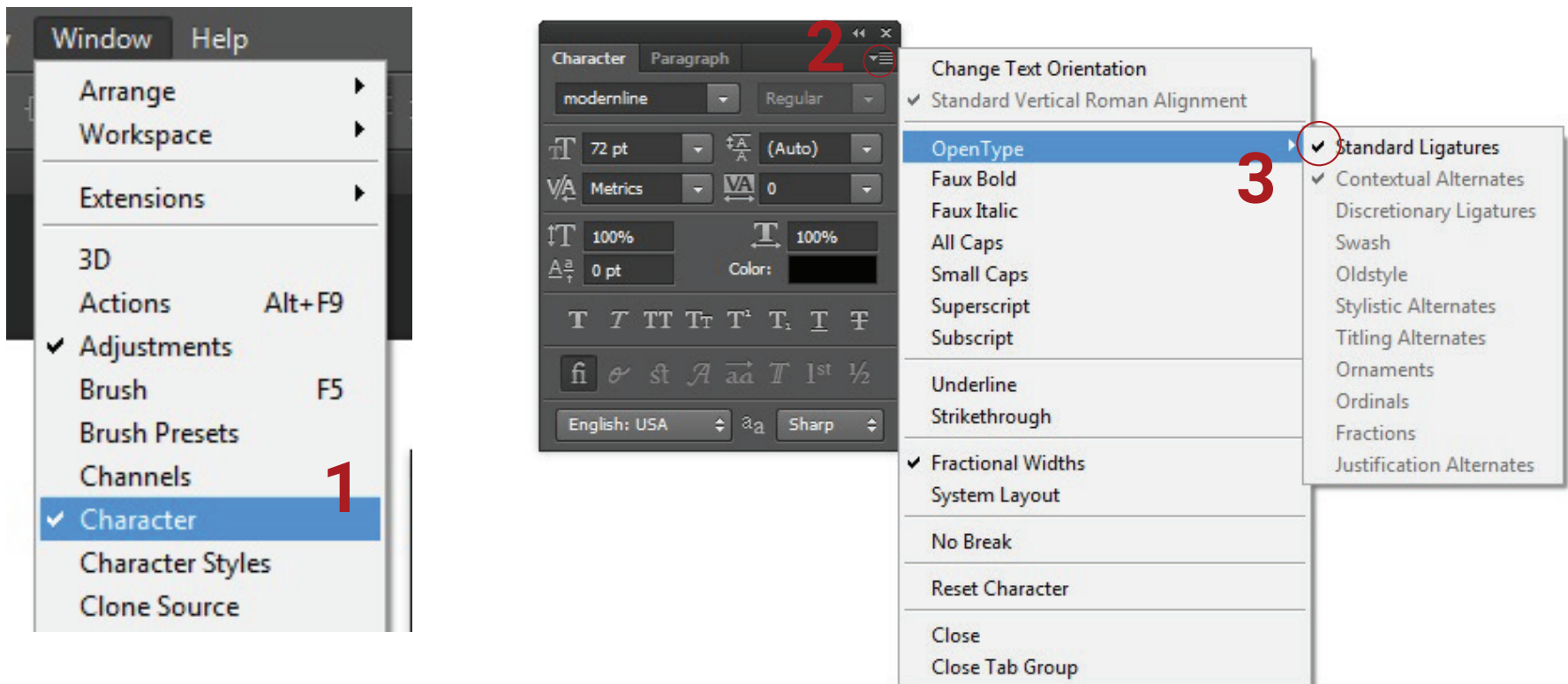
*The example font above maybe different. But the instruction is apply to any font.



*find fonts
find feelings*

2. Adobe Photoshop

Click Window - Character - Opentype - turn on Standard Ligatures



*The example font above maybe different. But the instruction is apply to any font.

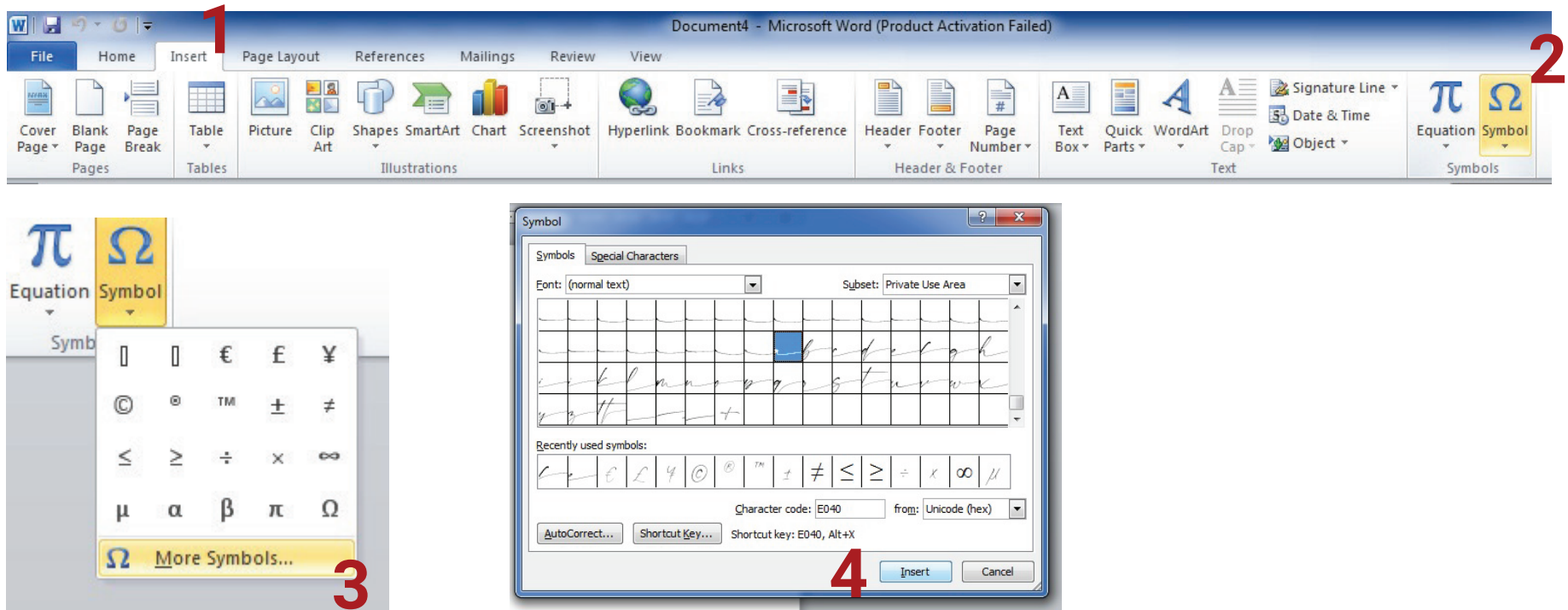


*find fonts
find feelings*

3. Microsoft Word

- Windows

Click Insert - Symbol - More Symbol - Insert Symbol



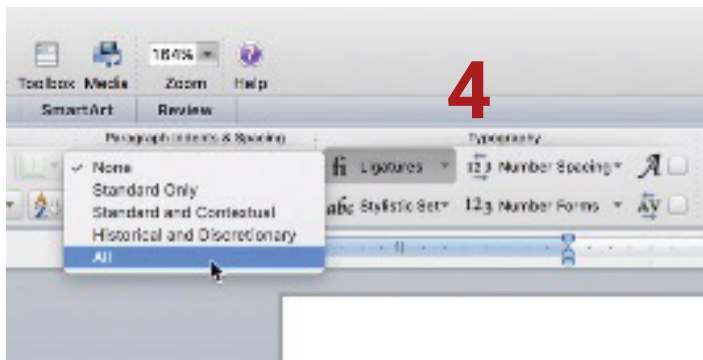
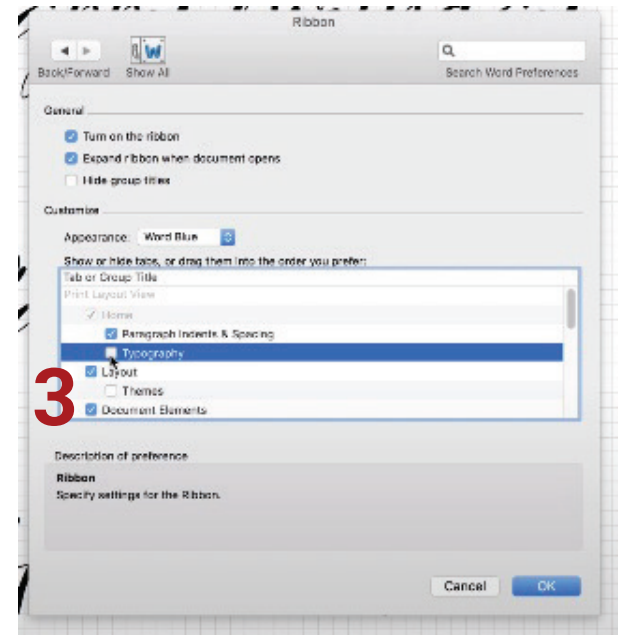
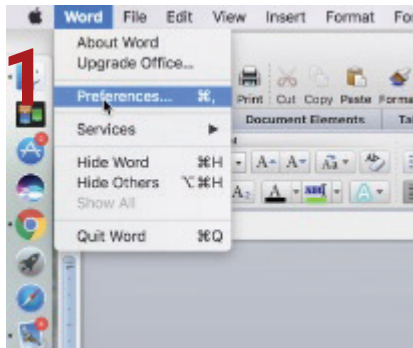
*The example font above maybe different. But the instruction is apply to any font.



*find fonts
find feelings*

- Mac

Highlight the letters - Click Word - Preferences - Ribbon - Click OK - turn on Typography - click Ligatures - Select All



Source : Youtube Debi Sementelli

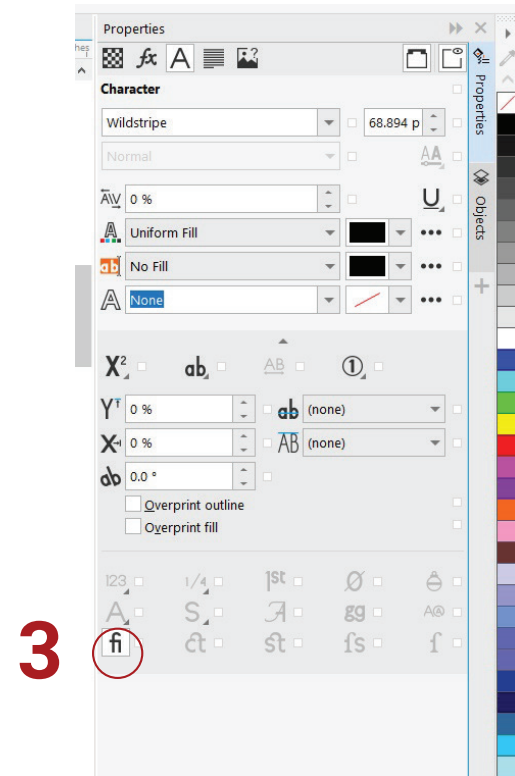
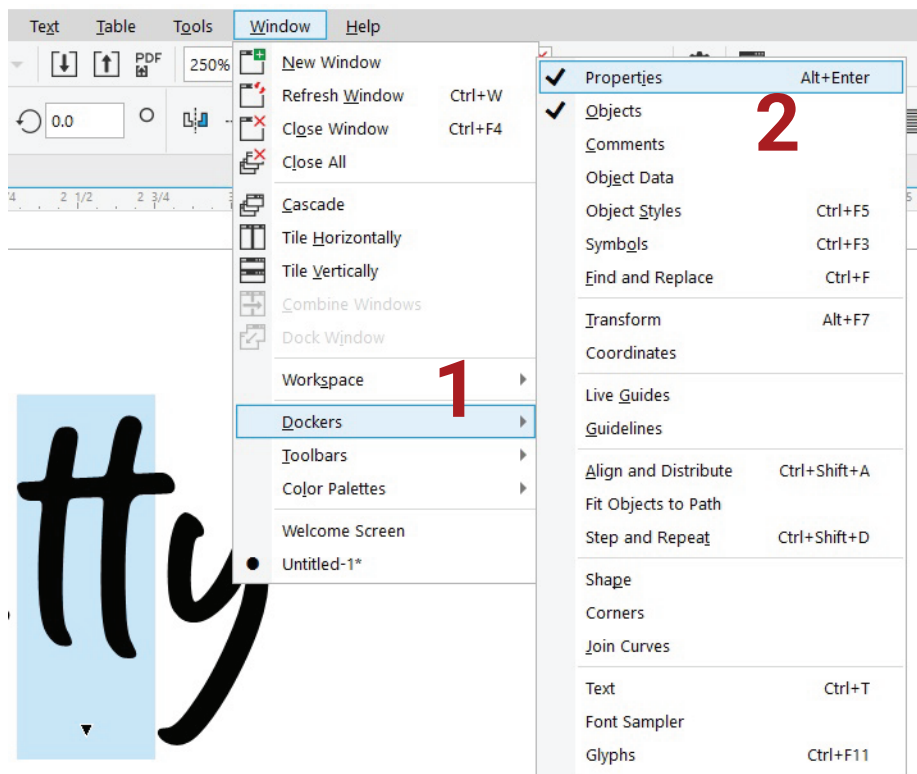
*The example font above maybe different. But the instruction is apply to any font.



*find fonts
find feelings*

4. Corel Draw

Highlight the letters - Click Window - Dockers - Properties - turn on Standard Ligatures



*The example font above maybe different. But the instruction is apply to any font.